

Position Description



1. General Information

Position Title:	Occupational Therapist
Division/Department:	Epworth Rehabilitation/ Occupational Therapy
Position Reports to:	Allied Health Manager or other as delegated by Manager
Enterprise/Individual Agreement:	Epworth Healthcare Health Professionals Enterprise Agreement (HSUA No. 3)
Classification/Grade:	Grade 1: HP12 – HP17
Location:	Richmond, Hawthorn & Camberwell
Employment Status:	Full Time - Ongoing
Resource Management (for Management positions only) Number of Direct Reports: Budget under management:	N/A
Key Relationships - internal and external	<ul style="list-style-type: none">• Patients and family members & visitors• Multi-disciplinary team members and Nursing staff• Consultants, Medical Staff & VMO's• External service providers and referrers

2. Overview of Epworth HealthCare

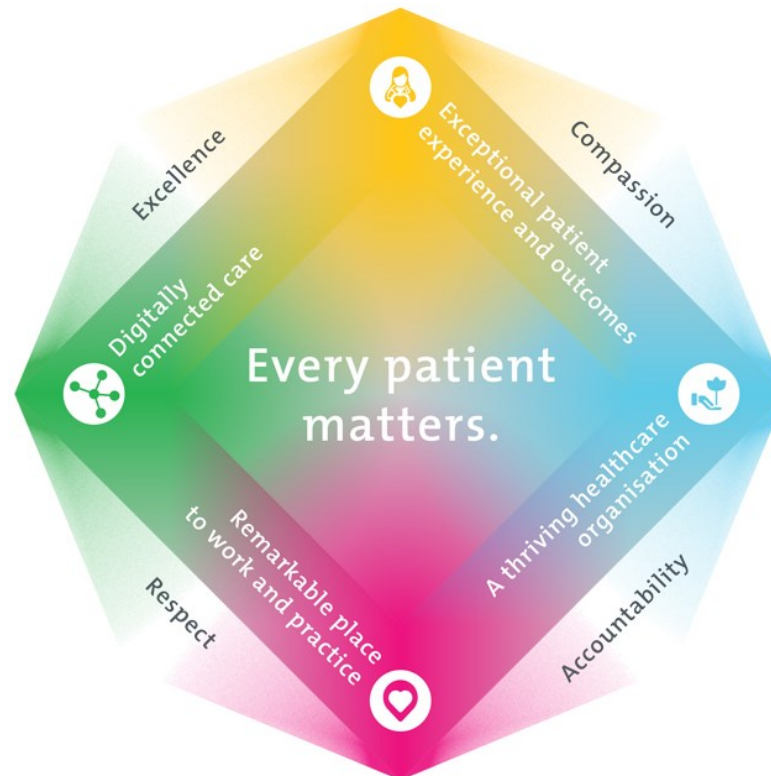
Epworth HealthCare is Victoria's largest not-for-profit private health care group, renowned for excellence in diagnosis, treatment, care and rehabilitation. Epworth is an innovator in Australia's health system, embracing the latest in evidence-based medicine to pioneer treatments and services for our patients.

Epworth's values define our approach and our delivery. We pride ourselves on communicating our values and delivering on them in a real and meaningful way. Our Values are Compassion, Accountability, Respect and Excellence. More information can be found on the [Epworth website](#).

Epworth's purpose is Every Patient Matters.

Our Vision is Delivering another 100 years of exceptional healthcare and innovation to the Victorian community.

3. Epworth HealthCare Strategy



All roles are linked to the Epworth strategy and are fundamental in achieving its vision and purpose.

Exceptional patient experience and outcomes - To empower our patients and deliver compassionate, expert and coordinated care.

A thriving healthcare organisation - To adapt and grow in a changing healthcare landscape by delivering a unique private not-for-profit healthcare organisation.

Remarkable place to work and practice - To ensure Epworth is an outstanding place to work and practice through a culture of care and investment in our people.

Position Description



Digitally connected care - To innovate and improve the digital experience, interactions and outcomes for our patients, staff and doctors.

4. Purpose of the Position

To provide optimal Occupational Therapy services and positive clinical outcomes to the patient ensuring long-term health and wellbeing that is consistent with Epworth HealthCare's Vision and Values. Working within a multidisciplinary team, provide effective clinical, educational, emotional support and holistic best practice care to the patient and the family. Promote excellence to our customers and the marketplace and support colleagues by sharing knowledge and expertise.

5. Clinical Governance Framework

This role is required to put into practice the Clinical Governance Framework at Epworth as every employee is accountable for ensuring that our patients and community receive safe, high quality and person-centred care in every interaction with Epworth. This is achieved through active participation in the five domains of clinical governance at Epworth:

Clinical Governance Domain	Role
<i>Leadership and culture</i>	Promote and participate in a supportive, fair and transparent culture where lessons from previous outcomes are learned and patient safety and quality is a priority at all levels of the organisation.
<i>Consumer Partnerships</i>	Understand and where relevant, ensure that each patient is actively involved in their own care and treatment including families/carers wherever possible.
<i>Effective Workforce</i>	Develop and maintain one's own competency, skills and knowledge to ensure high quality service provision and care.
<i>Clinical Safety and Effectiveness</i>	Understand and where relevant, ensure, that the right care is provided to the right person at the right time, in the right place and patient outcomes are monitored and improved.
<i>Risk Management</i>	Be responsible for identifying and reporting risks, hazards and near misses for people in our care and participating in risk mitigation strategies.

6. Key Accountabilities

KEY RESPONSIBILITIES	MEASURES/KPIs TO BE ACHIEVED
Clinical Care/Professional Practice	

Position Description



<ul style="list-style-type: none"> • Ensure optimal level of function and independence for all patients in the clinical caseload by appropriate assessments and treatments, provided in both individual and group sessions • Assess patient performance in relation to physical, cognitive, psychological aspects and their environment and determine appropriate interventions to enable participation in the activities of everyday life • Establish and maintain appropriate standards of practice relating to patient admission, assessment, treatment, family liaison and discharge planning • Implement, monitor and modify treatment programs within the clinical area as appropriate using a patient centred evidence informed practice model of care • Demonstrate empathy and compassion and encourage patient and family members participation in all stages of care • Practise within the scope of registration of an Occupational Therapist with AHPRA • Practise in accordance with the National Safety and Quality Health Services (NSQHS) Standards • Maintain patient confidentiality as prescribed by the relevant acts and organisational policies and procedures • Understand and implement Epworth HealthCare Policies and Procedures and departmental work place instructions • Contribute to the development and maintenance of new and established clinical services within Occupational Therapy and the broader team 	<ul style="list-style-type: none"> • Appropriate standards of practice relating to assessments and treatments are implemented in a timely manner • Compliance with mandatory and team based documentation in patients' medical records within agreed timeframes • Direct patient care provided within allocated time frames from referral to treatment and within funding parameters • Timely intervention is provided to support the team in achieving patients' length of stay goals • Sound relationships are developed and maintained with customers, family and colleagues • Patient satisfaction results meet organisational targets • Compliance with NSQHS and clinical competencies • Compliance with accepted professional standards and Code of Ethics • Compliance with legislative and common law requirements including Privacy Act and Health Records Act • Adherence to all Epworth Policies and Procedures
<p>Customer Service</p> <p>Epworth is committed to the provision of excellent customer service to all of our people, customers and stakeholders including patients and external suppliers. Superior patient service leads to improved recovery in a trusting, caring environment and also creates a safe environment for patients and employees.</p> <ul style="list-style-type: none"> • Provide excellent, helpful service to patients, visitors and staff • Communicate with clear and unambiguous language in all interactions, tailored to the audience • Build customer relationships and greet customers and patients promptly and courteously 	<ul style="list-style-type: none"> • Patient and customer service satisfaction surveys within agreed targets • Patients are given the opportunity to actively participate in their treatment planning and implementation • Use AIDET principles in all interactions • Issues or concerns are proactively escalated to the manager and resolved in a timely manner • Compliments recorded on Riskman

Position Description



<ul style="list-style-type: none"> Actively seek to understand patients' and their family's circumstances, expectations and issues 	<ul style="list-style-type: none"> Consistently meet or exceeds the expectations of our patients and customers at all times Awareness of Epworth HealthCare's complaints process and assistance provided to patients if required
Team Work /Communication <ul style="list-style-type: none"> Actively participate as a member of the department and multidisciplinary team Provide positive and constructive feedback to other team members 	<ul style="list-style-type: none"> Collaborate effectively with all other team members and external agencies for efficient patient management Attendance and active participation in departmental and multidisciplinary team meetings
Continuous Quality Improvement <ul style="list-style-type: none"> Actively participate in quality activities ensuring opportunities for improvement are actively explored and best practice is achieved Provide suggestions and feedback to consistently improve service delivery, clinical practice and patient satisfaction Promote and enhance Epworth HealthCare and the department's positive image within the community 	<ul style="list-style-type: none"> Evidence of participation in quality enhancement activities Quality projects are completed within agreed time frame Demonstrated commitment to Australian Commission on Safety and Quality in Health Care, National Safety and Quality HealthCare Services (NSQHS) Standards Departmental resources, equipment and educational information are maintained and updated
Personal and Professional Development <ul style="list-style-type: none"> Participate in ongoing professional development by upgrading clinical competencies and knowledge and participating in both internal and external educational opportunities Actively participate in Performance Development Plan annually and evaluate personal performance and plan self-development Educate and support AHA staff and students as required Contribute to student development programs as directed 	<ul style="list-style-type: none"> Participation in Occupational Therapy Week Attendance in external professional development educational forums Participation in in-service and education activities and events Completion of performance review and development plan

Position Description



Safety and Wellbeing <ul style="list-style-type: none"> Participate actively and positively in the area of health and safety to reduce all hazards and incidents within the workplace Report all hazards, incidents, injuries and near misses immediately to the manager and log them in RiskMan 	<ul style="list-style-type: none"> Adhere to infection control/personal hygiene precautions Adherence to Epworth OHS policies, protocols and safe work procedures at all times Mandatory training completed at agreed frequency
---	--

7. Position Requirements/Key Selection Criteria

COMPONENT	
Qualifications	Essential <ul style="list-style-type: none"> Bachelor of Applied Science (Occupational Therapy) or equivalent as recognised by the World Federation of Occupational Therapy Current registration with the Occupational Therapy Board of Australia via Australian Health Practitioner Regulation Agency (AHPRA)
Previous Experience	Desirable <ul style="list-style-type: none"> Relevant experience in a hospital, rehabilitation or community setting
Required Knowledge & Skills	Essential <ul style="list-style-type: none"> An understanding of relevant assessments, monitoring and interventions Well-developed organisational and planning skills Ability to interact and collaborate with all members of a multidisciplinary team Good verbal and written communication and presentation skills Innovative, proactive and creative attitude to problem solving Excellent computer literacy including MS Office Word & Excel Knowledge and understanding of the National Standards and ACHS Accreditation Standards Demonstrate customer service focus in service provision and evaluation Ability to drive a motor vehicle and holds a full current driver's licence Desirable <ul style="list-style-type: none"> Skills in conflict resolution and ability to manage challenging behaviour

Position Description



	<ul style="list-style-type: none">• Knowledge of medico-legal and health and safety issues as they relate to health care• Appropriate knowledge of community resources and services
<p>Personal Attributes & Values</p> <p>All employees are expected to consistently work in accordance with Epworth's values and behaviours</p> <ul style="list-style-type: none">• Compassion• Accountability• Respect• Excellence	<p>Essential</p> <ul style="list-style-type: none">• Professional Development is regarded as a priority• Ability to work autonomously• Sensitive to the psychosocial implications of illness• Sensitive to cultural, racial and gender differences• Helpful and professional manner <p>Desirable</p> <ul style="list-style-type: none">• Flexible and available to be on call and to work weekends as required• Flexibility to assist others within the department and across sites as required

Document Control

Date Developed:	Date Last Reviewed:	Developed and Reviewed By (Position Title):
August 2016	April 2025	People & Culture and Allied Health Managers

Position Description



Employee Position Declaration

I have read and understand the requirements and expectations of the above Position Description. I agree that I have the physical ability to fulfil the inherent physical requirements of the position, and accept my role in fulfilling the Key Accountabilities. I understand that the information and statements in this position description are intended to reflect a general overview of the responsibilities and are not to be interpreted as being all-inclusive.

Employee Signature:

Print Name:

Date:
