

# Position Description



## 1. General Information

<b>Position Title:</b>	Enrolled Nurse
<b>Position Reports to:</b>	Nurse Unit Manager (or nominee)
<b>Enterprise/Individual Agreement:</b>	Epworth HealthCare Nurses and Midwives Enterprise Agreement 2020-2024
<b>Classification/Grade:</b>	Grade 1 or Grade 2
<b>Key Relationships - internal and external</b>	<ul style="list-style-type: none"><li>• Patients, inclusive of family member(s) &amp; visitors</li><li>• Medical staff and VMOs</li><li>• Multi-disciplinary team colleagues Internal service providers ie. pathology, patient transport, radiology</li></ul>

## 2. Overview of Epworth HealthCare

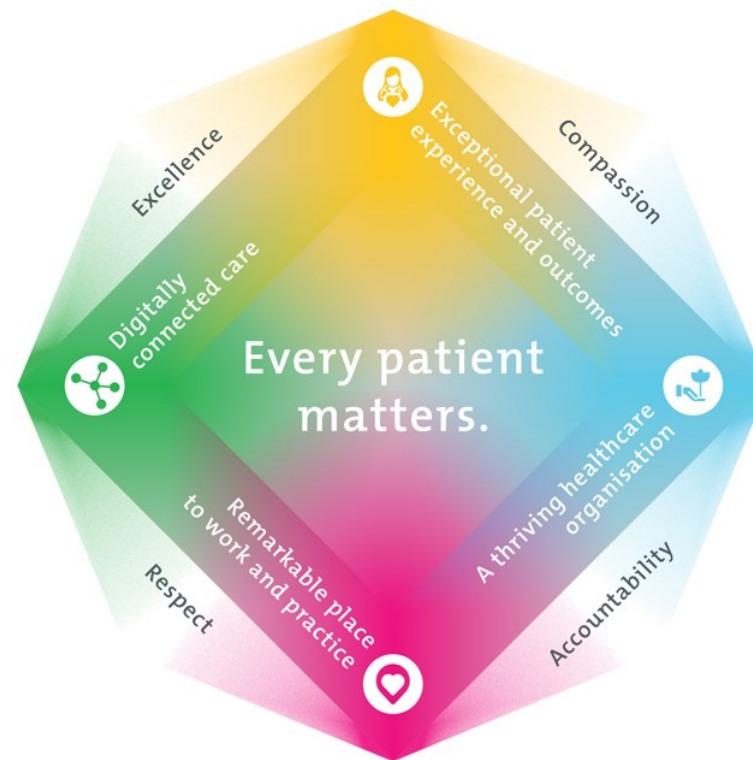
Epworth HealthCare is Victoria's largest not-for-profit private health care group, renowned for excellence in diagnosis, treatment, care and rehabilitation. Epworth is an innovator in Australia's health system, embracing the latest in evidence-based medicine to pioneer treatments and services for our patients.

Epworth's values define our approach and our delivery. We pride ourselves on communicating our values and delivering on them in a real and meaningful way. Our Values are Compassion, Accountability, Respect and Excellence. More information can be found on the [Epworth website](#).

Epworth's purpose is Every Patient Matters.

Our Vision is Delivering another 100 years of exceptional healthcare and innovation to the Victorian community.

## 3. Epworth HealthCare Strategy



All roles are linked to the Epworth strategy and are fundamental in achieving its vision and purpose.
<b>Exceptional patient experience and outcomes</b> - To empower our patients and deliver compassionate, expert and coordinated care.
<b>A thriving healthcare organisation</b> - To adapt and grow in a changing healthcare landscape by delivering a unique private not-for-profit healthcare organisation.
<b>Remarkable place to work and practice</b> - To ensure Epworth is an outstanding place to work and practice through a culture of care and investment in our people.
<b>Digitally connected care</b> - To innovate and improve the digital experience, interactions and outcomes for our patients, staff and doctors.

## 4. Purpose of the Position

# Position Description



[Provide a brief overview and the main objective of the position]

## 5. Clinical Governance Framework

This role is required to put into practice the Clinical Governance Framework at Epworth as every employee is accountable for ensuring that our patients and community receive safe, high quality and person-centred care in every interaction with Epworth. This is achieved through active participation in the five domains of clinical governance at Epworth:

Clinical Governance Domain	Role
<i>Leadership and culture</i>	Promote and participate in a supportive, fair and transparent culture where lessons from previous outcomes are learned and patient safety and quality is a priority at all levels of the organisation.
<i>Consumer Partnerships</i>	Understand and where relevant, ensure that each patient is actively involved in their own care and treatment including families/carers wherever possible.
<i>Effective Workforce</i>	Develop and maintain one's own competency, skills and knowledge to ensure high quality service provision and care.
<i>Clinical Safety and Effectiveness</i>	Understand and where relevant, ensure, that the right care is provided to the right person at the right time, in the right place and patient outcomes are monitored and improved.
<i>Risk Management</i>	Be responsible for identifying and reporting risks, hazards and near misses for people in our care and participating in risk mitigation strategies.

## 6. Key Accountabilities

KEY RESPONSIBILITIES	MEASURES/KPIs TO BE ACHIEVED

<p><b>Customer Service</b> <i>(delete this information if this is an employee position)</i></p> <p>Epworth is committed to the provision of excellent customer service to all of our people, customers and stakeholders including patients and external suppliers.</p> <p>Superior patient service leads to improved healing in a trusting, caring environment and creates a safe environment for patients and employees.</p> <ul style="list-style-type: none"> <li>• Role model and actively promote a culture of high quality patient care</li> <li>• Provide excellent, helpful service to patients, visitors and staff</li> <li>• Communicate with clear and unambiguous language in all interactions, tailored to the audience</li> <li>• Build customer relationships and greet customers and patients promptly and courteously</li> <li>• Actively seek to understand patients' and their family's expectations and issues, using multiple strategies</li> <li>• Uses data (such as patient experience feedback) to identify opportunities for improvement in internal processes and systems that directly impact patient care and customer service</li> <li>• Responds quickly and proactively escalate concerns when necessary</li> <li>• Role model and actively promote a culture of high-quality patient care and experience by ensuring that solutions, practices and procedures (such as</li> </ul>	<ul style="list-style-type: none"> <li>• Patient and customer service satisfaction surveys within agreed targets</li> <li>• Use AIDET principles in all interactions</li> <li>• Compliments to complaints ratios</li> <li>• Completes leader rounding at agreed frequency</li> <li>• Issues are escalated to the manager and resolved in a timely manner</li> </ul>

<p>hourly rounding, leader rounding and bedside handover) are carried out with empathy and compassion</p>	
<p><b>Safety and Wellbeing</b> <i>(delete this information if this is an employee position)</i></p> <p>To ensure a safe workplace is provided for all employees and other personnel including contractors, agency staff, volunteers and students.</p> <ul style="list-style-type: none"> <li>• All employees and other personnel under the authority of the manager are fully informed of the hazards associated with their work activities, adequately trained and instructed in safe work procedures and appropriately supervised. Participate actively and positively in the area of health and safety to reduce all hazards and incidents within the workplace</li> <li>• Integrate and review OHS performance in staff PDPs</li> <li>• Ensure all direct reports are held accountable for safety performance and actions</li> </ul>	<ul style="list-style-type: none"> <li>• Adhere to infection control/personal hygiene precautions</li> <li>• Implement and adhere to Epworth OHS policies, protocols and safe work procedures</li> <li>• Ensure all hazards, incidents and injuries are reported in Riskman within 24 hours</li> <li>• Ensure all hazards, incidents and injuries are investigated and corrective actions implemented within agreed timeframes</li> <li>• Mandatory training completed at agreed frequency</li> </ul>
<p><b>Customer Service</b> <i>(delete this information if this is a people leader position)</i></p> <p>Epworth is committed to the provision of excellent customer service to all of our people, customers and stakeholders including patients and external suppliers.</p> <p>Superior patient service leads to improved healing in a trusting, caring environment and creates a safe environment for patients and employees.</p> <ul style="list-style-type: none"> <li>• Provide excellent, helpful service to patients, visitors and staff</li> <li>• Communicate with clear and unambiguous language in all interactions, tailored to the audience</li> <li>• Build customer relationships and greet customers and patients promptly and courteously</li> <li>• Actively seek to understand patients' and their family's (customers) expectations and issues</li> </ul>	<ul style="list-style-type: none"> <li>• Patient and customer service satisfaction surveys within agreed targets</li> <li>• Use AIDET principles in all interactions</li> <li>• Issues are escalated to the manager and resolved in a timely manner</li> </ul>

# Position Description



<p><b>Safety and Wellbeing</b> (<i>delete this information if this is a people leader position</i>)</p> <p>Participate actively and positively in the area of health and safety to reduce all hazards and incidents within the workplace</p> <ul style="list-style-type: none"> <li>Report all hazards, incidents, injuries and near misses immediately to your manager and log them in RiskMan</li> </ul>	<ul style="list-style-type: none"> <li>Adhere to infection control/personal hygiene precautions</li> <li>Implement and adhere to Epworth OHS policies, protocols and safe work procedures</li> <li>Mandatory training completed at agreed frequency</li> </ul>
--	--

## 7. Position Requirements/Key Selection Criteria

COMPONENT	
Qualifications	<p><b>Essential</b></p> <ul style="list-style-type: none"> <li></li> </ul> <p><b>Desirable</b></p> <ul style="list-style-type: none"> <li></li> </ul>
Previous Experience	<p><b>Essential</b></p> <ul style="list-style-type: none"> <li></li> </ul> <p><b>Desirable</b></p> <ul style="list-style-type: none"> <li></li> </ul>
Required Knowledge & Skills	<p><b>Essential</b></p> <ul style="list-style-type: none"> <li></li> </ul> <p><b>Desirable</b></p> <ul style="list-style-type: none"> <li></li> </ul>
Personal Attributes & Values All employees are expected to consistently work in accordance with	<p><b>Essential</b></p> <ul style="list-style-type: none"> <li></li> </ul> <p><b>Desirable</b></p> <ul style="list-style-type: none"> <li></li> </ul>

# Position Description



Epworth's values and behaviours <ul style="list-style-type: none"><li>• Compassion</li><li>• Accountability</li><li>• Respect</li><li>• Excellence</li></ul>	
--	--

## Document Control

Date Developed:	Date Last Reviewed:	Developed and Reviewed By (Position Title):

## 8. Employee Position Declaration

I have read and understand the requirements and expectations of the above Position Description. I agree that I have the physical ability to fulfil the inherent physical requirements of the position, and accept my role in fulfilling the Key Accountabilities. I understand that the information and statements in this position description are intended to reflect a general overview of the responsibilities and are not to be interpreted as being all-inclusive.

Employee Signature: \_\_\_\_\_

Print Name: \_\_\_\_\_ Date: \_\_\_\_\_