

Job Description

Title: Cardiac Physiologist

Band: 5

Staff Group: Medicine

Reports to: Principal Cardiac Physiologist

Job Summary:

To undertake and report on routine clinical Cardiac Investigations on patients to inform clinical diagnosis across two sites (Queen Alexandra hospital and at the Community Diagnostic Centre at St Marys Hospital, Portsmouth).

To participate in advanced Cardiac investigations with direct supervision from senior Physiologists.

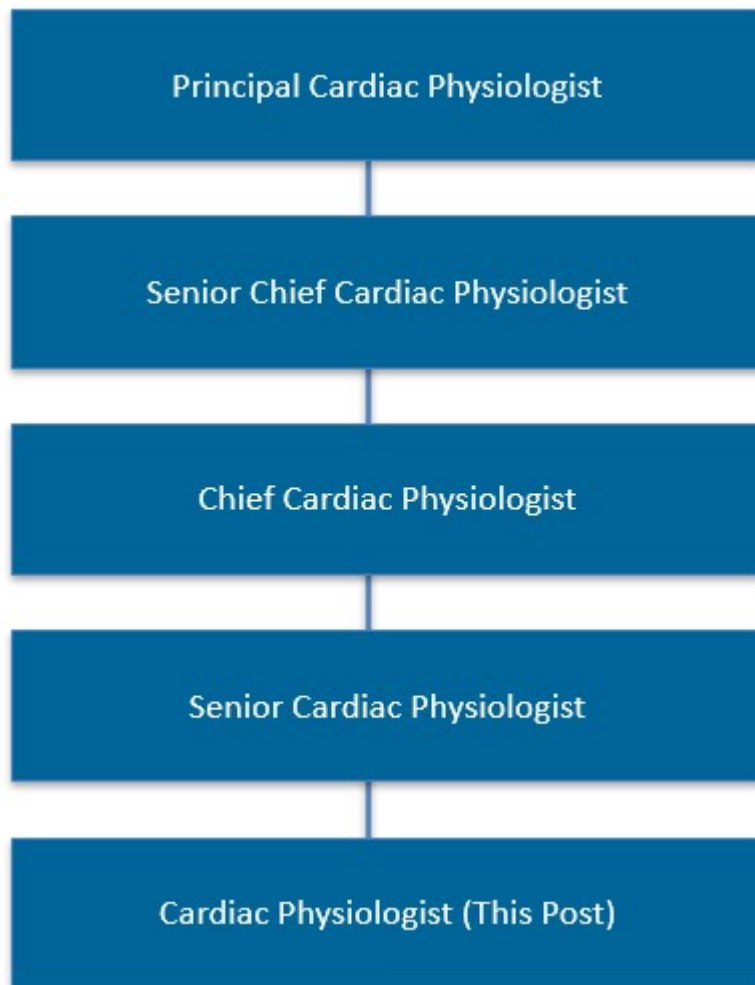
To participate in departmental audit and take part in research and development opportunities.

To be responsible for self-learning.

Key Responsibilities:

- Competently and accurately perform ECG's to SCST standards.
- Skilled knowledge of ECG interpretation.
- Application of 24-hour ambulatory monitoring equipment and confidently generating a comprehensive and accurate report for review by senior staff.
- Acting as a second Physiologist in Exercise ECG testing.
- Working towards setting up and monitoring of pressure equipment during cardiac catheters and PCI as part of a team.
- Working towards joining the 24/7 PCI on call service.
- Working towards assisting clinician during permanent pacemaker implantation for VVI and DDD pacemakers.
- To assist clinician in TOE Echocardiography preparing the probe for use and taking recordings and documenting accurate data.
- Working towards performing transthoracic echocardiography under the direct supervision of senior Physiologist.
- Assist in pacemaker clinic with direct support from Senior Physiologist in the follow up of VVI and DDD Pacemakers.
- To assist in Reveal implants with appropriate programming.
- To become proficient in Reveal follow up including home monitoring.
- To be conversant in the emergency arrest procedure including defibrillation.
- Working towards professional registration.

Organisational Chart



Management Essentials

We are proud to offer a comprehensive development programme, Management Essentials, designed to equip staff with the skills and knowledge to become effective managers.

This post has been identified as a role that will benefit from this training, and you will be able to enrol in both mandatory and, relevant, optional modules upon commencement with the Trust.

Please click [here](#) for further information on the Management Essentials programme.



Leadership Insights

Additionally, our new leadership development programme, Leadership Insights, aims to help all newly promoted, existing and aspiring leaders, at every level at the Trust, to recognise, reflect and role model the core principles of people-centred leadership.

If, this is of interest to you, you will be able to enrol upon commencement with the Trust.

Please click [here](#) for further information on the Leadership Insights programme.

Person Specification

Qualifications

- BSc Clinical degree or equivalent.
- At or working towards professional registration.

Skills and Knowledge

- Ability to prioritise workload.
- Excellent communication skills oral and written.
- Good interpersonal skills.
- Able to work as part of a team or independently.
- Confident manner.

Experience

- Proven achievement of competencies in a range of routine cardiac investigations.
- Exposure to advanced cardiac investigations.

Working Together For Patients with Compassion as One Team Always Improving

Strategic approach clarity on objectives, clear on expectations

Relationship building communicate effectively, be open and willing to help, courtesy, nurtures partnerships

Personal credibility visibility, approachable, back bone, courage, resilience, confidence, role model, challenge bad behaviour, manage poor performance, act with honesty and integrity

Passion to succeed patient centred, positive attitude, take action, take pride, take responsibility, aspire for excellence

Harness performance through teams champion positive change, develop staff, create a culture without fear of retribution, actively listen and value contribution, feedback and empower staff , respect diversity

Job holders are required to act in such a way that at all times the health and well-being of children and vulnerable adults is safeguarded. Familiarisation with and adherence to the Safeguarding Policies of the Trust is an essential requirement for all employees. In addition all staff are expected to complete essential/mandatory training in this area.

Print Name:

Date:

Signature: