

## Job Description

**Title:** Associate Practitioner

**Band:** Band 4

**Reports to:** CSRT Operational Lead

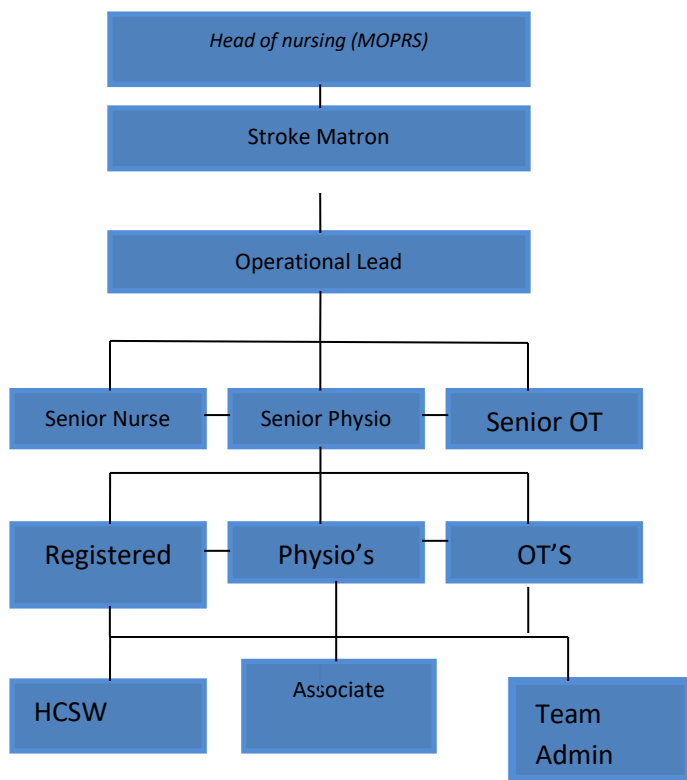
### Job Purpose:

To provide specialist stroke rehabilitation in the patients own home and community setting under indirect supervision of qualified professionals.

### Key Responsibilities

- Assessing, ordering, and fitting of variety of equipment and adaptations
- Completing a variety of relevant outcome measures
- Following and progressing therapy and care plans
- Accurate documentation, including activity and care plans, discharge summaries
- Risk assessment and management of day to day tasks
- Being part of completing follow up reviews

## Organisational Chart



---

## Other

This job description does not purport to cover all aspects of the job holder's duties but is intended to be indicative of the main areas of responsibility

---

 <h3>Management Essentials</h3> <p>We are proud to offer a comprehensive development programme, Management Essentials, designed to equip staff with the skills and knowledge to become effective managers.</p> <p>This post has been identified as a role that will benefit from this training, and you will be able to enrol in both mandatory and, relevant, optional modules upon commencement with the Trust.</p> <p>Please click <a href="#">here</a> for further information on the Management Essentials programme.</p>	 <h3>Leadership Insights</h3> <p>Additionally, our new leadership development programme, Leadership Insights, aims to help all newly promoted, existing and aspiring leaders, at every level at the Trust, to recognise, reflect and role model the core principles of people-centred leadership.</p> <p>If, this is of interest to you, you will be able to enrol upon commencement with the Trust.</p> <p>Please click <a href="#">here</a> for further information on the Leadership Insights programme.</p>
-----------------------------------------------------------------------------------------------------------------------------------------------------------------------------------------------------------------------------------------------------------------------------------------------------------------------------------------------------------------------------------------------------------------------------------------------------------------------------------------------------------------------------------------------------------------------------------------------------------------	--------------------------------------------------------------------------------------------------------------------------------------------------------------------------------------------------------------------------------------------------------------------------------------------------------------------------------------------------------------------------------------------------------------------------------------------------------------------------------------------------------------------------------------------------------------------------------------------------

## Person Specification

### Qualifications

#### *Essential*

- Level 2 Functional skills (English & Mathematics GCSE grade 4)
- Level 3 Qualifications: NVQ 3, Diploma, T level or relevant experience or relevant short courses

#### *Desirable*

- Health and Social Care Foundation degree or equivalent

### Experience

#### *Essential*

- Significant experience of working in a relevant health or social care setting

#### *Desirable*

- Knowledge and experience of working with stroke patients.
- Experience of working in community setting

### Skills & Knowledge

#### *Essential*

- Full driving license with appropriate car insurance
- Ability to work as part of a team
- Recognise own strengths and limitations

*Desirable*

- Competent IT skills
- Knowledge of relevant multi-disciplinary team members roles (nursing/physiotherapy/occupational therapy/speech and language therapy)

**Working Together For Patients with Compassion as One Team Always Improving**

**Strategic approach** (clarity on objectives, clear on expectations)

**Relationship building** (communicate effectively, be open and willing to help, courtesy, nurtures partnerships)

**Personal credibility** (visibility, approachable, back bone, courage, resilience, confidence, role model, challenge bad behaviour, manage poor performance, act with honesty and integrity)

**Passion to succeed** (patient centred, positive attitude, take action, take pride, take responsibility, aspire for excellence)

**Harness performance through teams** (champion positive change, develop staff, create a culture without fear of retribution, actively listen and value contribution, feedback and empower staff , respect diversity)

---

Job holders are required to act in such a way that at all times the health and well being of children and vulnerable adults is safeguarded. Familiarisation with and adherence to the Safeguarding Policies of the Trust is an essential requirement for all employees. In addition all staff are expected to complete essential/mandatory training in this area.

**Print Name:**

**Date:**

**Signature:**