

Job Description

Title: Senior Nurse Endoscopist

Band: 8a

Reports to: Senior Matron- Medicine

Job Summary:

- The primary focus for the post holder will be to deliver a robust and high quality service within the Gastroenterology service.
 - The post holder will provide and ensure a high standard of care is delivered for all patients that require gastrointestinal diagnosis and treatment.
 - The post holder will work autonomously and will provide patients with a comprehensive and accurate assessment and diagnosis as well as advice and treatment.
 - The post holder will have JAG accreditation for all endoscopic procedures that they are performing.
 - The post holder will provide training for trainee consultant, medical and nursing Endoscopists ensuring that their training is comprehensive and safe.
 - The post holder will practice autonomously and competently in delivering independent assessment, clinical examination, diagnosis, clinical decision making, prescribing and planning care and treatment and safe discharge of patients within a defined caseload inclusive of routine, urgent, surveillance and straight to test referrals.
 - The post holder will manage their own caseload of patients ensuring all follow-up investigations or referrals are made in keeping with diagnosis and histology result.
 - This role will aid in reducing the time required for medical/consultant colleagues to perform diagnostic/therapeutic endoscopy allowing them to focus on more specialist intervention.
 - This role will enable patients on waiting lists to be followed-up in a timely manner reducing trust capacity breaches.
-

Key Responsibilities:

Must be competent in three or more of the following:

1. Gastroscopy with dye spray
2. Therapeutic gastroscopy
3. PEG (Percutaneous Endoscopic Gastroscopy) insertion
4. Colonoscopy with full accreditation including level 2 polypectomy
5. Accredited JAG Train-the-Trainer in either upper or lower GI endoscopy
6. Bowel Cancer Screening Endoscopist
7. Nurse Independent Prescriber
8. Conduct specialist outpatient clinics

Clinical

- To demonstrate advanced empathetic interpersonal and communication skills in dealing with patients and carers through the patient pathway from the point of diagnosis through to discharge/recovery (as appropriate).
- To be an autonomous practitioner providing a high quality general and specialist gastrointestinal endoscopy service.
- To demonstrate advance specialist knowledge, skills and innovative practice and share with others.
- To demonstrate continual evaluation of practice within nursing area, making agreed changes.
- Assess and monitor risk in own and others' practice, acting on the results thereby ensuring safe delivery of care.
- Accredited Joint Advisory Group (JAG) Endoscopist in diagnostic gastroscopy, flexible sigmoidoscopy or colonoscopy.
- Accredited Joint Advisory Group (JAG) Endoscopist in bowel scope screening.
- To assess patients as well as taking a comprehensive medical and drug history prior to their endoscopy and identify any associated risks or contraindications to the proposed procedure.
- To consent patient prior to endoscopic procedures in accordance with Trust Policies
- To be competent in intravenous drug administration and cannulation.
- To administer drugs (including sedation) to patients in accordance with Trust Policy/Patient Group Directions.
- To manage own endoscopy lists autonomously and work unsupervised referring to medical colleagues or other health care professionals as and when necessary.
- To cover for other Endoscopists when they are absent or on leave.
- To maintain accurate record keeping in accordance with current practice, review histology and ensure appropriate follow-up with referring healthcare professions/multi-disciplinary team, in accordance with agreed patient care pathways, policies and protocols.
- To support the endoscopy unit in creating an environment that is challenging, stimulating and supportive to individuals, promoting lifelong learning in the improvement of patient care.
- To maintain nursing skills in the care of patients through admission to discharge.
- To support the Endoscopy Matron in the implementation and delivery of endoscopic and outpatient services.
- To initiate and participate in the evaluation and development of policies and procedures related to the clinical area of endoscopy.
- To attend and actively participate in relevant and appropriate Trust-wide meeting.
- To request further diagnostic tests including CT scans in conjunction with IRMER policy.
- Identify abnormal GI pathology and take appropriate action including taking biopsies for histopathology investigation and interpreting and acting on results as appropriate.
- To communicate diagnoses and provide extensive support to patients/carers utilising advanced communication skills, particularly at times of exposure to highly distressing or highly emotional circumstances, e.g. breaking bad news of a likely cancer.
- To communicate effectively with the Multi-Disciplinary Team (MDT) where appropriate and attend MDT.
- To challenge poor practice and inappropriate interventions in relation to the clinical specialty.
- To maintain professional clinical links with local and national bodies within the clinical specialty.

Research and Audit

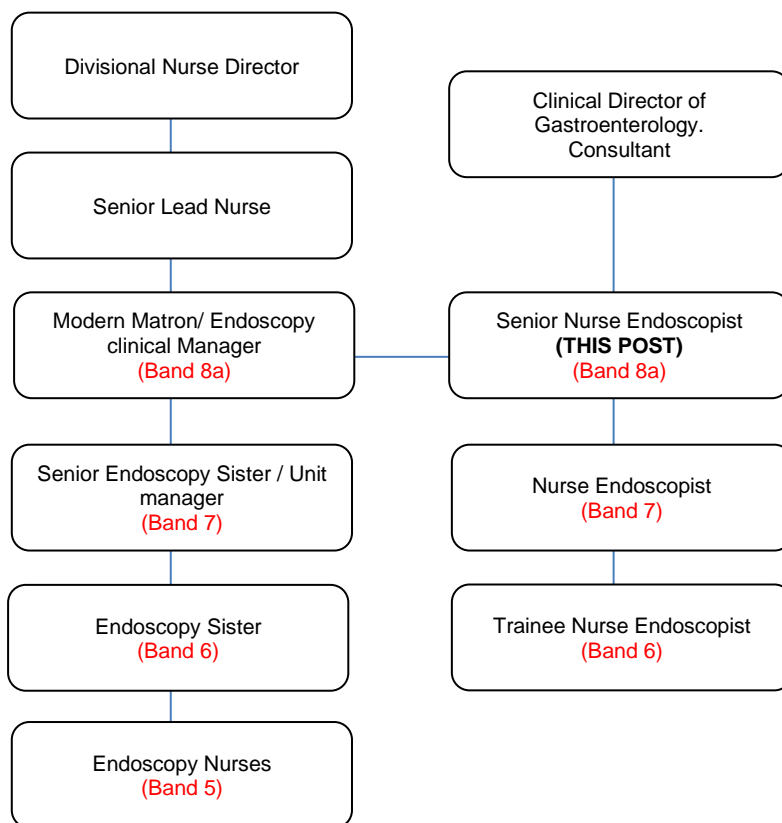
- To demonstrate effectiveness of the Nurse Endoscopist role
- To support the department in audit and research to support service development.
- To ensure GCP training is up to date in order to take part in clinical trials.

- To participate in, and promote research, audit and satisfaction surveys within the clinical area of endoscopy - to support quality assurance and monitor and maintain standards in line with Joint advisory group (JAG), Global Rating Score (GRS), British society of gastroenterology (BSG) and personal Key Performance Indicators (KPI).
- Work in collaboration with clinical leads in relation to national initiatives such as Care Quality Commission standards and NICE guidelines.
- To lead on implementation of relevant audit results in collaboration with Endoscopy Users Group when appropriate and relevant to the needs of the service and its users.
- Reporting all untoward occurrences and take appropriate action to reduce recurrences and minimise risk.

Education and Professional Development

- Actively promote an effective learning environment and participate in the delivery of education and professional development for all team members.
 - To be a resource for in-depth knowledge of own specialist clinical area for both patients and other health care professionals and actively disseminate relevant information through appropriate channels.
 - Be a visible, accessible figure whom staff and users can access for assistance, advice and support within the clinical area of endoscopy.
 - Be conversant with current training curricula for all learners in this environment.
 - Identify and implement training needs in relation to equipment used and monitor safe use.
 - Develop, implement and revise clinical protocols in conjunction with inter-professional team, based on evidence-based practice.
 - In conjunction with the multidisciplinary team, ensure that information provided to health professionals and patients is representative of research-based recommendations and are within the National Standards Frameworks where appropriate.
 - To develop appropriate information systems and ensure documentation systems are in place to assist in high-level delivery of care.
 - Promote the services provided at the Trust through attendance at conferences and published papers.
 - To commit to a long-term training and development program that may include residential courses/cross site training
 - Deliver informal and formal educational initiatives for staff, patients and carers
 - To ensure the Nurse Endoscopist team is trained to national standards
 - Maintain a personal professional profile, which demonstrates expert practice by ensuring mandatory training on ESR is completed and updated regularly according to trust policies.
-

Organisational Chart



Management Essentials

We are proud to offer a comprehensive development programme, Management Essentials, designed to equip staff with the skills and knowledge to become effective managers.

This post has been identified as a role that will benefit from this training, and you will be able to enrol in both mandatory and, relevant, optional modules upon commencement with the Trust.

Please click [here](#) for further information on the Management Essentials programme.



Leadership Insights

Additionally, our new leadership development programme, Leadership Insights, aims to help all newly promoted, existing and aspiring leaders, at every level at the Trust, to recognise, reflect and role model the core principles of people-centred leadership.

If, this is of interest to you, you will be able to enrol upon commencement with the Trust.

Please click [here](#) for further information on the Leadership Insights programme.

Person Specification

Qualifications

- Current RN +/- RN, registration with NMC and any other relevant post registration specialist qualifications
- Post graduate Masters Level qualification (PgC, PgD or Master equivalent
- JAG accredited in either gastroscopy, flexible sigmoidoscopy or colonoscopy
- JAG accredited in train-the-trainers in relevant field where appropriate
- Bowel Scope Accredited
- Bowel Cancer Screening Accredited where appropriate
- Nurse Independent and Supplementary Prescriber where appropriate
- Evidence of developing policy, guidelines and managing resources
-

Skills and Knowledge

- Ability to work on own initiative as well as a part of a team. Self-motivated.
- Able to deal with difficult and sensitive situations tactfully and minimise emotional upset
- Effective people management skills. Experience of leading and managing a team
- Ability to negotiate, influence and escalate and seek advice
- Demonstrate knowledge of the theory and application of Clinical Governance.
- Understanding of the role of research and development activities and clinical effectiveness. Evidence of experience with audit and or research
- Understanding of health policy and the national and local nursing agenda
- Ability to interpret and analyse data, meet deadlines
- Demonstrate effective contribution to business planning and service developments
- Intermediate IT skills and presentation skills

Experience

- Extensive experience in Endoscopy

Working Together For Patients with Compassion as One Team Always Improving

Strategic approach (clarity on objectives, clear on expectations)

Relationship building (communicate effectively, be open and willing to help, courtesy, nurtures partnerships)

Personal credibility (visibility, approachable, back bone, courage, resilience, confidence, role model, challenge bad behaviour, manage poor performance, act with honesty and integrity)

Passion to succeed (patient centred, positive attitude, take action, take pride, take responsibility, aspire for excellence)

Harness performance through teams (champion positive change, develop staff, create a culture without fear of retribution, actively listen and value contribution, feedback and empower staff, respect diversity)

Job holders are required to act in such a way that at all times the health and well being of children and vulnerable adults is safeguarded. Familiarisation with and adherence to the Safeguarding Policies of the Trust is an essential

requirement for all employees. In addition all staff are expected to complete essential/mandatory training in this area.

Print Name:

Date:

Signature: