

Job Description

Title: Clinical Flow Cytometry Specialist Biomedical Scientist, Blood Sciences

Band: 6

Staff Group: Allied Health Professional

Reports to: Operational Manager

Job Summary:

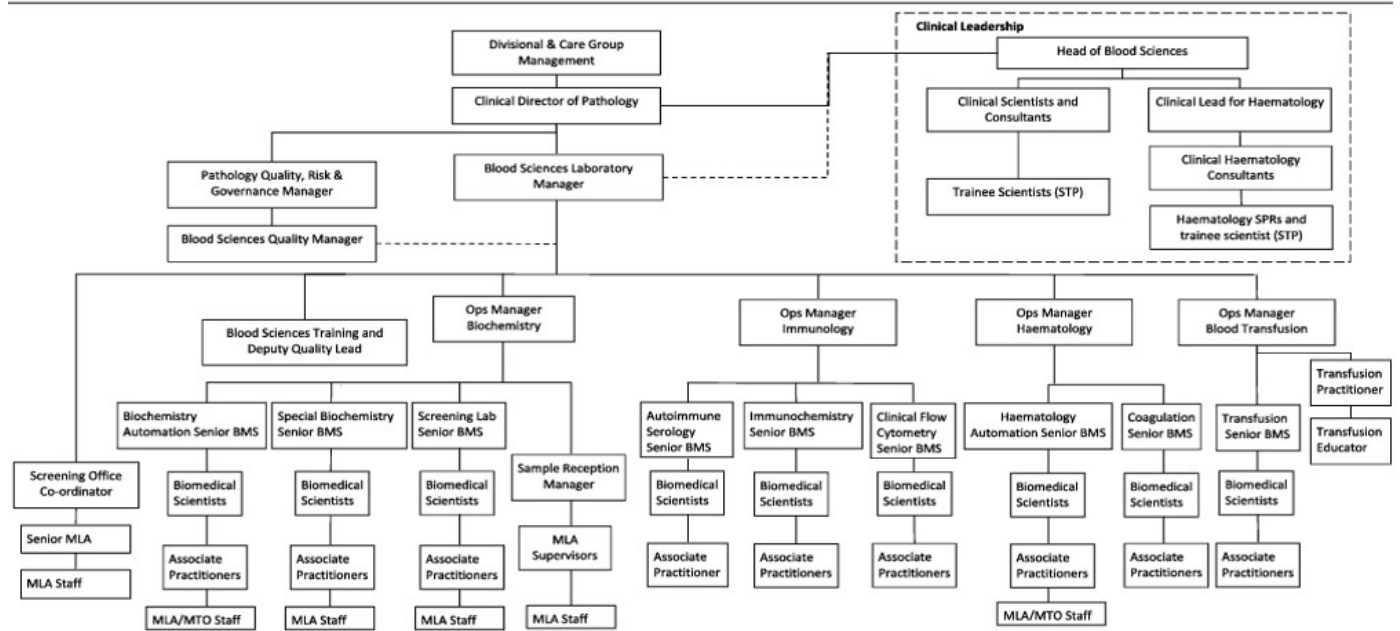
This is a full-time, non-shift, Specialist BMS role in the Clinical Flow Cytometry Section of Blood Sciences

The role of the Specialist Biomedical Scientist is to carry out investigations on samples of blood and body fluids to aid in the diagnosis of disease and monitor the treatment of patients by:

- Assisting in the provision of reliable and accurate analytical data for the Trust, in accordance with relevant regulatory standards and requirements (including ISO 15189, HFEA and MHRA)
- To work as part of a team of Biomedical Scientists to deliver, within budget, a patient-orientated medical laboratory service to contribute to efficient and effective care
- To demonstrate an exemplary standard of work at all times; including the supervision, training and guidance of laboratory staff as required
- To deputise for Senior Biomedical Scientists as required
- To provide specialist advice to clinicians as to the appropriateness of tests and timescales
- To assist in the ongoing achievement of departmental quality standards
- Possession of the IBMS Specialist Portfolio or equivalent in Haematology or Immunology.
- Desirable to have attained some specialist knowledge in Clinical Flow Cytometry through worked experience as a HCPC Registered Biomedical Scientist working in a Immunophenotyping laboratory.
- To participate in the agreed working patterns of the department to provide a safe and effective service
- To perform designated specialist role such as Health & Safety Co-ordinator, Fire Warden, Film Co-ordinator as assigned by Laboratory Managers


Key Responsibilities

Organisational Chart for the Department of Blood Sciences Portsmouth Hospitals University NHS Trust



Other

This job description does not purport to cover all aspects of the job holder's duties but is intended to be indicative of the main areas of responsibility



Management Essentials

We are proud to offer a comprehensive development programme, Management Essentials, designed to equip staff with the skills and knowledge to become effective managers.

This post has been identified as a role that will benefit from this training, and you will be able to enrol in both mandatory and, relevant, optional modules upon commencement with the Trust.

Please click [here](#) for further information on the Management Essentials programme.



Leadership Insights

Additionally, our new leadership development programme, Leadership Insights, aims to help all newly promoted, existing and aspiring leaders, at every level at the Trust, to recognise, reflect and role model the core principles of people-centred leadership.

If, this is of interest to you, you will be able to enrol upon commencement with the Trust.

Please click [here](#) for further information on the Leadership Insights programme.

Person Specification

Qualifications

Essential

- BSc (Hons) or equivalent in Biomedical Sciences
- Registration with the Health Care Professions Council (HCPC) as a Biomedical Scientist
- Be able to demonstrate a broad level of specialist knowledge and practical experience by possession of an Institute of Biomedical Science (IBMS) Specialist Portfolio or equivalent
- Evidence of continuing professional development

Desirable

- Evidence of supervisory experience
- Evidence of training and developing staff
- Evidence of contribution to service improvement

Experience

Essential

- At least two years' experience working in a relevant clinical laboratory environment

Skills & Knowledge

Essential

- Ability to use highly complex automated equipment and associated computer software systems
- Ability to maintain high standards of accuracy and hand to eye coordination in repetitive manual techniques
- Ability to work in a timely methodical and organised manner
- Ability to undertake the technical validation of results
- The ability to work using own initiative and without supervision
- The ability to supervise and train laboratory staff effectively
- Knowledge to undertake the accurate interpretation of diagnostic laboratory results
- Excellent verbal and written communication skills
- A knowledge of Health and Safety legislation and procedures within a clinical laboratory
- An understanding of laboratory Quality Management Systems
- Can use Microsoft Word and Excel

Desirable

- Practical knowledge of departmental equipment and methods

Working Together For Patients with Compassion as One Team Always Improving

Strategic approach (clarity on objectives, clear on expectations)

Relationship building (communicate effectively, be open and willing to help, courtesy, nurtures partnerships)

Personal credibility (visibility, approachable, back bone, courage, resilience, confidence, role model, challenge bad behaviour, manage poor performance, act with honesty and integrity)

Passion to succeed (patient centred, positive attitude, take action, take pride, take responsibility, aspire for excellence)

Harness performance through teams (champion positive change, develop staff, create a culture without fear of retribution, actively listen and value contribution, feedback and empower staff, respect diversity)

Job holders are required to act in such a way that at all times the health and wellbeing of children and vulnerable adults is safeguarded. Familiarisation with and adherence to the Safeguarding Policies of the Trust is an essential requirement for all employees. In addition, all staff are expected to complete essential/mandatory training in this area.

Print Name:

Date:

Signature: