

## Job Description

**Title:** Clinical Engineering Technician

**Band:** 5

**Reports to:** Clinical Engineering Team Leader

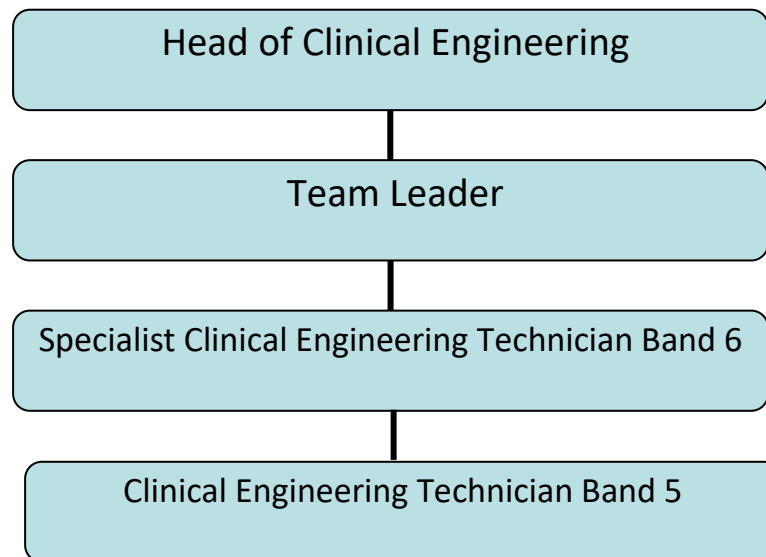
### Job Summary:

1. To provide medical device management services including deployment, maintenance, calibration, and commissioning to a wide range of clinical specialties and geographical areas.
  2. Provide assistance and guidance to nursing and other staff in use of medical devices.
- 

### Key Responsibilities:

1. Perform a range of technical duties, guided by procedures involving autonomous work on both general and complex medical equipment in the clinical and workshop environment to ensure the optimum effectiveness, reliability, availability and safety of medical devices.
  2. To commission, calibrate, deploy and maintain a wide range of complex medical devices e.g. Patient Ventilators, Incubators, Resuscitaires, Patient Monitoring, Defibrillators, etc.
  3. Investigate and test medical devices, analysing the results to diagnose faults or problems on complex medical devices. Demonstrating equipment operation and techniques to individual clinical users where this is a solution to a problem. Communication of investigation results to users, colleagues and suppliers, sharing knowledge and experience.
  4. Using primarily computerised systems, make accurate equipment maintenance history records and other information supporting audit, quality and performance monitoring.
  5. Ensure all duties are delivered in an efficient, safe, professional and organised way according to Section policies, procedures and Health and Safety documentation.
  6. Using knowledge and experience of clinical procedures involving medical devices, liaise with clinical and technical staff to ensure medical devices are deployed and used safely and where appropriate contribute to the training of technical, medical and nursing staff and patients in the proper care and effective use of medical devices.
  7. Liaise with medical device suppliers to obtain technical and commercial information in relation to equipment maintenance and evaluation.
  8. First line support of instrumentation interfaces to specialist clinical computer systems, liaising with IM&T to resolve problems as necessary.
  9. Monitor stocks and initiate orders to ensure the timely and adequate procurement of medical device parts and accessories to maintain devices in a serviceable condition.
  10. In consultation with Clinical Engineering Team Leader comment and contribute to planned maintenance schedules and section procedures to develop the service in an effective and efficient manner.
  11. Liaise with users and other team members to prioritise and plan own workload to ensure optimum efficiency in responding appropriately to urgent requests. Complete and review equipment and job audits to ensure quality and performance targets are met.
  12. Work activities may involve the exposure to unpleasant conditions e.g. body fluids and distressing situations in clinical environments.
-

## Organisational Chart



## Person Specification

### Qualifications

#### Essential

- BEng/BSc in electronics or a scientific subject OR HNC/HND working towards degree

#### Desirable

- Other applicable qualifications and with relevant experience

### Skills and Knowledge

#### Essential

- Work extensively without supervision using own initiative
- Sound knowledge of a broad range of scientific principles
- Proficient communication and interpersonal skills
- Ability to organise own workload
- Able to use standard office and bespoke software applications
- Licensed to drive a van to provide technical support at the premises of PCTs and other customers

#### Desirable

- Use of specialised equipment for testing medical devices
- Mechanical workshop practices
- Understanding of clinical measurements and procedures

### Experience

- Eighteen months experience of electronic and electromechanical systems.  
(or exceptionally other equivalent combination of qualifications and knowledge)
- Medical devices and healthcare environment
- Manufacturer's training courses

*Working together...*



for  
Patients



with  
Compassion



as  
One Team



Always  
Improving

- Information Technology experience
- Member of an appropriate professional institute
- Member of Register of Clinical Technologists (RCT)

## PERSONAL QUALITIES

### Essential

- Responsive and flexible attitude and approach
- Create and maintain effective professional relationships
- Effective communicator both orally and written
- Ability to act and ensure delivery
- Physically fit to undertake tasks involving frequently lifting and moving medical equipment
- Prepared to work in clinical areas where there are critically unwell patients connected to, and dependant on, medical devices

### Desirable

- Prepared to work some unsocial hours

## Working Together:

### For Patients

### With Compassion

### As One Team

### Always Improving

Job holders are required to act in such a way that at all times the health and well being of children and vulnerable adults is safeguarded. Familiarisation with and adherence to the Safeguarding Policies of the Trust is an essential requirement for all employees. In addition all staff are expected to complete essential/mandatory training in this area.

**Print Name:**

**Date:**

**Signature:**

*Working together..*



for  
Patients



with  
Compassion



as  
One Team



Always  
Improving